



WAFFLES LOFTON

2D Rigger and Compisitor

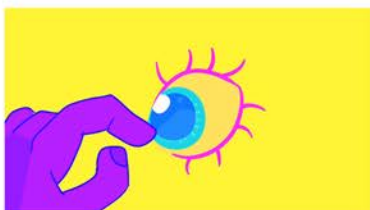
Demo Reel Shot Breakdown



Collaborative Project - Layout and Compositing (character animation by Chima Shinyia)
Created background and props in Adobe Photoshop
Created lighting, shadows, particles and color correction In Adobe After Effects



Sunny-Side Showdown- Character Animation and Compisiting
Created charcter rig for "Man" in Toon Boom Harmony
Animated rig and "Egg" in Toon Boom Harmony
Added shadows and color correction in Adobe After Effects



[AS] - Rigged and Animated
Created a rig for the eye and animated in Toon Boom Harmony



Free Pizza- Visual Effects
Created trippy effects using Adobe After Effects



Nightmare- Rigged and Animated
Created rig, animated character and effects in Toon Boom Harmony